



# Congratulations to the GSAE Leadership Academy Class of 2016

**THE GSAE LEADERSHIP** Academy features updated curriculum by GSAE past president and consultant **Cynthia Mills, FASAE, CAE**, The Leader's Haven, and includes content that GSAE members identify as most critical and relevant for today's association professional. Beginning with a kick-off retreat in October and culminating in July, participants go through components designed to facilitate experiential learning, including participant-led community-building exercises, resources sharing and CEO interviewing, topical content presented by GSAE facilitators, professional ethics education and site visits to a variety of associations. The next Leadership Academy class will begin in October 2017. The application will be available summer 2017. For more information visit [gsae.org](http://gsae.org). <

**Thank you to the sponsor  
of our 2015-2016  
Leadership Academy**



**Jessica Atkinson**  
Account Coordinator  
Nardone Consulting Group, Inc.



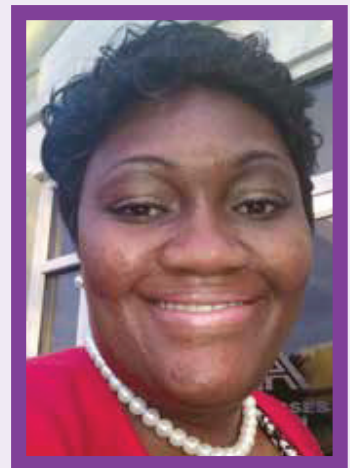
**Jennifer Baker**  
Chapter Programs Coordinator  
ASHRAE



**Julia Boyd, CAE**  
Director of Certification  
Professional Photographers of America



**Ashley Goodin, CAE**  
Technical Services Manager  
Architectural Woodwork Institute



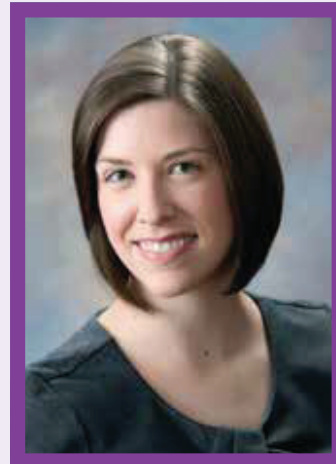
**Shan Haugbrook**  
Director of Membership, Education  
& Administrative Services  
Georgia Nurses Association



**Lisa Kraus Gardner**  
Marketing & Communications  
Nardone Consulting Group, Inc



**Kamilah Lewis**  
Director, Training and Workforce  
American College of Rheumatology



**Janell Martin**  
Senior Specialist, Membership  
American College of Rheumatology



**Tangela Monroe, MBA, CAE**  
Assistant Director  
AIA Georgia



**Jan Price, LCSW, CEAP**  
Director, Education & Credentialing  
Employee Assistance  
Professionals Association



**Regina Robuck**  
Association Senior Manager  
Meeting Expectations



**Sharon Ross**  
Specialist, Membership & Nominations  
Association of Rheumatology  
Health Professionals



**Courtney Stancil**  
Governance Support Manager  
National Commission on Certification  
of Physician Assistants



**Molly Whobrey**  
Association Manager  
Meeting Expectations